

11D
10N

醉美北疆

EXQUISITE NORTHERN XINJIANG

乌鲁木齐 | 富蕴 | 可可托海 | 布尔津 | 喀纳斯 | 贾登裕 | 禾木村 | 奎屯 | 那拉提草原
URUMQI | FUYUN | KEKETUOHAI | BURQIN | KANAS | JIADENGYU |
HEMU VILLAGE | KUYTUN | NALATI GRASSLAND





禾木村
Hemu Village

1 吉隆坡 ✕ 中转城市 ✕ 乌鲁木齐

集合于吉隆坡国际机场，飞往乌鲁木齐。

2 乌鲁木齐 - 460公里 | 7小时 - 富蕴

行驶在216国道上，欣赏沿途的风景。途中俯瞰中国第二沙漠——古尔班通古特沙漠腹地、途径卡拉麦里有蹄类自然保护区和火烧山。

3 富蕴 - 260公里 | 4小时 - 布尔津

可可托海景区 (含区间车)

【额尔齐斯大峡谷】【神钟山】

“可可托海”在哈萨克语中意为“美丽的地方，河流众多”，恰如其分地描述了该地区的地理。风景区由额尔齐斯河穿过，拥有引人注目的峡谷，如红山峡谷，以其红色的悬崖而闻名。

五彩滩

著名的地质景观，以其绚丽多彩的岩石层而闻名。五彩滩因其地貌的独特性和丰富的色彩被誉为“上帝的调色板”。

4 布尔津 - 250公里 | 5小时 - 贾登裕

喀纳斯湖 (含区间车)

【卧龙湾】【月亮湾】【神仙湾】【观鱼亭】

是一个迷人的高山湖泊，以其原始的美丽和独特的自然环境而闻名。喀纳斯湖坐落在阿尔泰山脉内，清澈见底的湖水倒映着周围茂密的森林和雄伟的山峰。该湖是喀纳斯湖区的一部分，喀纳斯湖区景观多样，如茂密的森林、草地和雪山。喀纳斯湖本身经常因其颜色的变化而受到赞誉，根据季节和天气条件，从深蓝色到绿松石色。*如景区观鱼亭因天气原因暂时关闭或因预约人数限流，造成无法参观，不可要求退票，敬请谅解!因为此景点无单独售票且不产生额外费用。

5 贾登裕 - 150公里 | 2小时 - 布尔津

禾木村 (含区间车)

【图瓦村落】

禾木周围风景如画，有茂密的森林、连绵起伏的丘陵和白雪皑皑的山峰。该村主要居住着哈萨克族，他们过着游牧的生活方式。

6 布尔津 - 460公里 | 7小时 - 奎屯

途径百里油田

乌尔禾魔鬼城 (含电瓶小火车)

乌尔禾鬼城，又名乌尔禾风城，是位于中国新疆维吾尔自治区的地质和自然奇观。这个独特的地点拥有超凡脱俗的风蚀岩层景观，类似于高耸的摩天大楼、石柱和奇幻的形状。

7 奎屯 - 450公里 | 7小时 - 伊宁

赛里木湖 (含区间车)

赛里木湖是新疆最大的高山湖泊之一，因其原始之美而备受赞誉。不同季节，赛里木湖展现出不同的风景魅力。夏季，湖水倒映着蔚蓝的天空和周围的绿色植物，营造出一种宁静的氛围。秋天，周围的树叶变成了充满活力的调色板，使其成为风景如画的游览季节。

途径果子沟大桥

季节限定:

★6月-7月 薰衣草花园

※按每年气候不同会有所改变，以上花期不能完全保证准。

8 伊宁 - 320公里 | 4.5小时 - 新源

沿途观赏伊犁河谷风光

那拉提空中草原 (含区间车)

那拉提草原以其令人叹为观止的自然美景而著称，拥有辽阔的草地、起伏连绵的山丘以及丰富多样的动植物。夏季时，草原格外迷人，五彩斑斓的野花在草地上盛开，与周围群山的映衬交相辉映，构成了一个令人惊叹的背景。

9 新源 - 450公里 | 6.5小时 - 精河

喀赞其民俗风景区 (含马车/电瓶车)

【品尝维吾尔冰淇淋 + 民间歌舞表演】

10 精河 - 480公里 | 7小时 - 乌鲁木齐

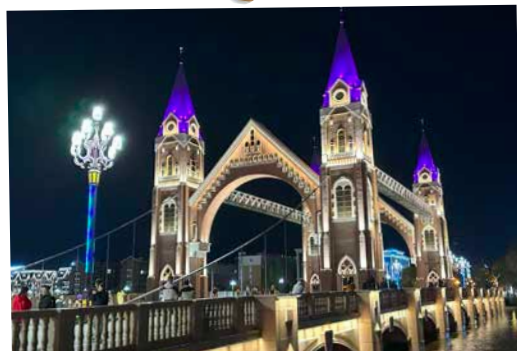
国际大巴扎

11 乌鲁木齐 ✕ 中转城市 ✕ 吉隆坡

送往机场，返回温暖的家。

※行程可能会以最终确定的航班而前后调动。

※因气候不定，每年景观视天气情况而异，难以完全确保最佳风景呈现。



喀纳斯铁桥“布尔津网红桥”
Kanas Tower Bridge

1 KUALA LUMPUR ✈️ TRANSIT CITY ✈️ URUMQI

Assemble in KL International Airport for flight to Urumqi.

2 FUYUN – 460km | 7hrs – BURQIN

Drive on the National Road NO 216 and enjoy the scenery passing by. Over-viewing the second desert of CHINA -- Gurbantunggut Desert Interior, Karamai Mountain Nature Reserve, and Huoshao (Burnt) Mountain on the way.

3 FUYUN – 260km | 4hrs – BURQIN

📍 **Keketuohai Scenic Area (Includes Shuttle Bus)** [Irtys Grand Canyon] [Shenzhong Mountain]

It is located in Heilongjiang Province, China, and is recognized as one of the northernmost inhabited areas in the country, situated about 1,000 kilometers from the North Pole.

📍 **Burqin Colorful Beach**

It's famous for its vibrant and unique geological formations, characterized by layers of multicolored rock.

4 BURQIN – 250km | 5hrs – JIADENGYU

📍 **Kanas Lake (Includes Shuttle Bus)** [Wolong Bay] [Moon Bay] [Fairy Bay] [Guanyu Pavilion]

Is a captivating alpine lake renowned for its pristine beauty and unique natural surroundings. Nestled within the Altai Mountains, Kanas Lake is characterized by crystal-clear waters that reflect the surrounding lush forests and majestic peaks. The lake is part of the larger Kanas Lake area, which includes diverse landscapes such as dense forests, meadows, and snow-capped mountains. Kanas Lake itself is often praised for its changing colors, ranging from deep blue to turquoise, depending on the season and weather conditions. ✨ **If the Guanyu Pavilion is temporarily closed due to weather or visitor limits, tickets are non-refundable as it is part of a package ticket and is not sold separately. Thank you for understanding, as this attraction is included in the general admission without extra charges.**

5 JIADENGYU – 150km | 2hrs – BURQIN

📍 **Hemu Village (Includes Shuttle Bus)** [Tuva Village]

Hemu Village is surrounded by picturesque landscapes, including dense forests, rolling hills, and snow-capped peaks. The village is predominantly inhabited by the ethnic Kazakh people, who maintain a nomadic lifestyle.

6 BURQIN – 460km | 7hrs – KUITUN

📍 **Passing through the Baili Oilfield** 📍 **Urho Ghost City (Includes Train)**

Urho Ghost City, also known as Wuerhe Wind City, is a geological and natural wonder located in the Xinjiang Uygur Autonomous Region of China. This unique site features an otherworldly landscape of wind-eroded rock formations that resemble towering skyscrapers, stone pillars, and fantastical shapes.

7 KUYTUN – 450km | 7hrs – YINING

📍 **Sayram Lake (Includes Shuttle Bus)**

Sayram Lake is one of the largest alpine lakes in Xinjiang and is often praised for its pristine beauty. During different seasons, Sayram Lake exhibits varying scenic charms. In the summer, the lake reflects the azure sky and surrounding greenery, creating a serene atmosphere. In autumn, the surrounding foliage transforms into a vibrant palette of colors, making it a particularly picturesque time to visit.

📍 **Passing through Guozi Gou Bridge**

Seasonal Arrangement:

★ Jun-Jul Lavender Garden

※ The floral season is subject to weather conditions.

8 YINING – 320km | 4.5hrs – XINYUAN

📍 **Passing through The Ili River Valley** 📍 **Nalati Grassland (Includes Shuttle Bus)**

Renowned for its breathtaking natural beauty, Nalati Grassland features expansive meadows, rolling hills, and a diverse array of flora and fauna. The grassland is especially captivating during the summer months when the meadows are adorned with colorful wildflowers, creating a stunning backdrop against the surrounding mountains.

9 XINYUAN – 450km | 6.5hrs – JINGHE

📍 **Explore the Kashgar Folk Culture Scenic Area (Includes Horse Carriage/Electric Car Rides)** [Taste Uighur Ice Cream + Enjoy Folk Singing & Dancing Performances]

10 JINGHE – 480km | 7hrs – URUMQI

📍 **Grand Bazaar**

11 URUMQI ✈️ TRANSIT CITY ✈️ KUALA LUMPUR

Proceed to airport for your flight back home with unforgettable memories.

✨ **Sequence of the itinerary is subject to change according to the final flight confirmation.**

✨ **Due to unpredictable weather, the scenery transforms each year with the changing conditions, making it challenging to promise the most breathtaking views at all times.**





行程亮点 HIGHLIGHT

- 可可托海景区
- 喀纳斯湖
- 禾木村
- 乌尔禾魔鬼城
- 赛里木湖

- 那拉提空中草原
- 喀赞其民俗风景区
- 国际大巴扎

- Keketuohai Scenic Area
- Kanas Lake
- Hemu Village
- Urho Ghost City
- Sayram Lake

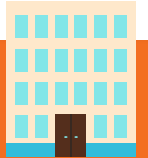
- Nalati Grassland
- Explore the Kashgar Folk Culture Scenic Area
- Grand Bazaar



美食 GOURMET

冷水鱼风味 / 新疆手抓饭 / 新疆拌面套餐 / 辣子鸡 / 红烧肉 / 新疆大盘鸡 / 烤羊肉 / 涮烤自助

Cold Water Fish Cuisine / Xinjiang Pilaf / Xinjiang Noodles Set / Spicy Chicken / Braised Pork Cuisine / Xinjiang Big Plate Chicken Cuisine / Roast Lamb Cuisine / Shabu-Shabu Buffet



酒店 HOTEL

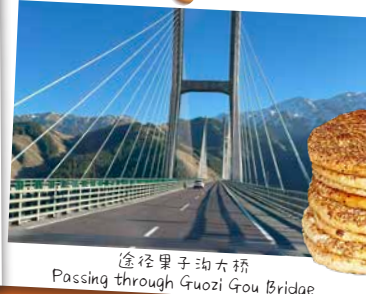
			早餐 Breakfast	午餐 Lunch	晚餐 Dinner
D1	乌鲁木齐 (1晚) Urumqi (1 Night)	乌鲁木齐德汇美居酒店或同级 Mercure Urumqi Doowin Wanda Plaza or similar	-	-	-
D2	富蕴 (1晚) Fuyun (1 Night)	富蕴维也纳国际酒店或同级 Vienna International Hotel or similar	酒店 Hotel	✓	✓
D3	布尔津 (1晚) Burqin (1 Night)	布尔津童话边城度假酒店或同级 Burqin Fairy Tale Border Town Resort Hotel or similar	酒店 Hotel	✓	✓
D4	贾登裕 (1晚) Jiadenyu (1 Night)	四季休闲酒店或同级 Four Seasons Amusement Hotel or similar	酒店 Hotel	✓	✓
D5	布尔津 (1晚) Burqin (1 Night)	布尔津童话边城度假酒店或同级 Burqin Fairy Tale Border Town Resort Hotel or similar	酒店 Hotel	✓	✓
D6	奎屯 (1晚) Kuytun (1 Night)	奎屯市新疆润锦国际酒店或同级 Xinjiang Runjing International Hotel or similar	酒店 Hotel	✓	✓
D7	伊宁 (1晚) Yining (1 Night)	新疆港湾酒店或同级 Xinjiang Harbour Hotel or similar	酒店 Hotel	✓	✓
D8	新源 (1晚) Xinyuan (1 Night)	新源海川酒店或同级 Haichuan Grand Hotel or similar	酒店 Hotel	✓	✓
D9	精河 (1晚) Jinghe (1 Night)	精河温州大酒店或同级 Wenzhou Hotel or similar	酒店 Hotel	✓	✓
D10	乌鲁木齐 (1晚) Urumqi (1 Night)	乌鲁木齐德汇美居酒店或同级 Mercure Urumqi Doowin Wanda Plaza or similar	酒店 Hotel	✓	✓
D11	-	-	早餐盒 Box Breakfast	-	-



国际大巴扎
Grand Bazaar



新疆大盘鸡
Xinjiang Big Plate Chicken Cuisine



途径果子沟大桥
Passing through Guozi Gou Bridge



新疆馕
Uyghur Bread

旅行必备:

护照或签证 - 团员有责任确保护照有效期至至少6个月(从返程日期算起), 并且取得必要的签证和准证。
旅游保险 - 出发前, 建议您购买全面的旅游保险。

条款:

1. 行程、膳食、酒店住宿、交通和自费项目可能会有所变动, 恕不另行通知。
2. 若出现无法预测的特殊情况特别是在旅游旺季期间, UVSB将保留更改或取消行程的权利。
3. 若UVSB的宣传手册或任何传播媒介, 出现任何形式的印刷失误或遗漏, 本公司一概不负责, 并且保留更正的权利。
4. 每位参与UVSB团的成员, 必须为自身安全或行为负责。若出现无法预测的特殊情况 (例如: 交通延误/取消、疾病、天气、示威、战争等等), 因而引发额外支出的问题, UVSB一概不负责, 旅客需自行负责额外的费用。
5. 详情条款, 请参阅单张网页或浏览 <https://ubingo.my/home/terms.php>
6. 以上图片仅供参考, 请以实物为准。

备注: UVSB为UbinGO Vacations Sdn Bhd.

中国团 - 附加条款:

1. 所有行程以中文讲解为主。
2. 如预订三人间, 提供的额外床垫为滚动式折叠床。
3. 团费仅适用于大马公民, 外国公民则需缴付额外费用。
4. 车上购物 - 为了您的方便起见, 车上会售卖当地小吃及伴手礼。
5. 团费已包含游客入境的优惠政策, 并且已将乐龄人士门票费用分摊到团费中。客人须出示相关文件以配合政策需求。请注意, 乐龄人士门票费用不可退还。

Tentative Flight Details - Subject to Change

Travel Essentials:

Passport & Visas - Each tour member is responsible to ensure their passport is valid for at least six (6) months from the return date of the trip and all necessary visas and permits have been acquired.
Travel Insurance - It's essential that you take out comprehensive travel insurance before travel.

Terms & Conditions:

1. Itineraries, meals, hotels, transportation and optional tour are subject to change without prior notice.
2. UVSB reserves the right to make changes to or cancel the itinerary at any time due to unforeseen circumstances, especially during peak periods or in the event of a force majeure.
3. UVSB is not responsible for omissions, printing and/or presentation errors in brochures or in any media where such information may be presented; UVSB reserves the right to make corrections as required.
4. Every person participating in UVSB's tours shall travel at his/her own risk. UVSB shall not be held liable to any person for additional expenses that may be incurred due to delays or changes in any transport services, sickness, weather, strikes, war or other causes.
5. For other terms & conditions, refer overleaf of invoice or visit <https://ubingo.my/home/terms.php>
6. All pictures shown are for illustration purpose only.

Note: UVSB refers to UbinGO Vacations Sdn Bhd.

China Tours - Additional Terms & Conditions:

1. Tours are conducted in Mandarin.
2. For booking triple-share rooms please note that additional bed is based on "roll-away" bed.
3. Tour fare quoted is for MALAYSIAN, the non-Malaysian surcharge applied.
4. In-coach Shopping - For your convenience, a variety of local snacks and gift are offered for sale on board the coach.
5. The tour fare already includes the preferential policy for foreign visitors upon entry, and the cost of elderly tickets has been included in the tour fare. Guests are required to present relevant documents to comply with the policy requirements. Please note that the cost of elderly tickets is non-refundable.

For Agent Use Only:

Updated Date: DEC 2024